

FLUTEC Hydraulics was formed in Changzhou of China with the mission of supplying the world class hydraulic cylinders and hydraulic systems to the various industrial sectors .

Since that date our company has successfully completed numerous installations throughout the Chinese mainland and abroad.

Our factory floor space exceeds 38,000 Sqr. meters and our 20 cranes provide us with the capability to handle and machine cylinders and components weighing up to 150,000kgs.

From conception to installation our engineers, factory staff and salesmen strive to ensure that our customers receive the very best in quality products and service.

Our manufacturing facility is capable of producing hydraulic cylinders up to the following dimensions:

Bore Diameter 3,000mm

Rod Diameter 2,500 mm

Stroke 20,000mm

The Typical Applications:

- Machine Manufacturing
- Casting Cylinders
- Mobile Hydraulics
- Press Manufacturing
- Hydroelectric Industry
- Offshore Industry
- Mining Industry
- Hydraulic Systems

FLUTEC Hydraulics source raw materials exclusively from the most reputable and quality approved suppliers in China such as (Chengdu Pangang,Xingcheng Special Steel,Hunan Valin Steel,Shanghai Baosteel,Jiangsu Shagang Steel etc.)

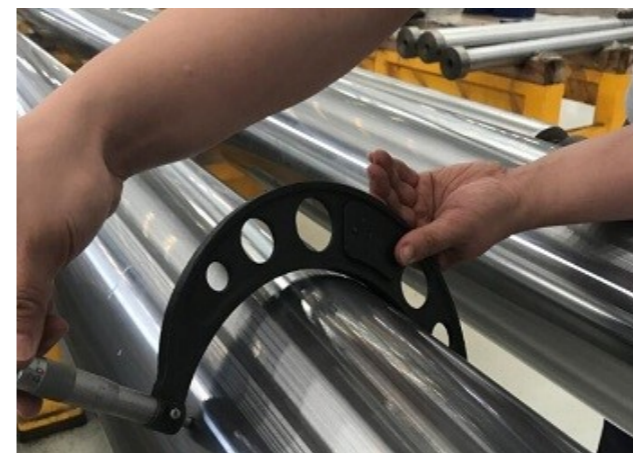
We at FLUTEC Hydraulics invite all customers to consider our facility for your next hydraulic project.



World Class Workshop



100Ton Capacity Crane



Strict Quality Control



In-time Delivery

CAPABILITIES



AUTOCAD ENGINEERING



RELIABLE COATING



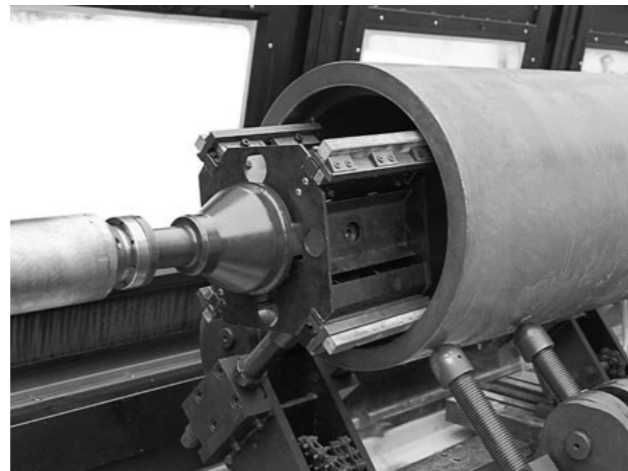
DEEP HOLE BORING



LONG LATHE MACHING



CNC TURNING



HORIZONTAL HONING



HEAVY GRINDING MACHINE



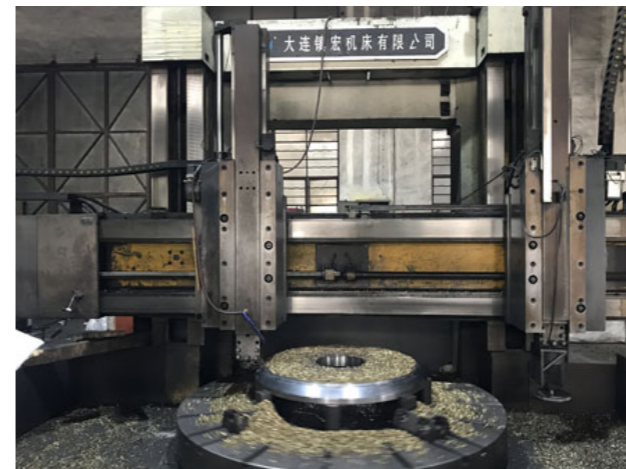
SUNNEN HONING MACHINE



SURFACE GRINDING



DEEP BORING



LARGE VERTICAL MACHINE



HEAT TREATMENT

CAPABILITIES

CAPABILITIES



CONVENTIONAL TURNING



DRILLING & MILLING



CNC MACHINING



AUTOMATIC WELDING



SAFE WELDING



GENERAL ASSEMBLING



AUTOMATIC PAINTING



SEAWORTHY PACKING



PRESSURE TESTING



BLASTING & PAINTING



CONTAINER LOADING



MORDENIZED WORKSHOP

CAPABILITIES

APPLICATIONS



HYDRAULIC PRESS



FORKLIFT



DAM GATE



VERTICAL ROLLER MILL



DUMP TRUCK



AERIAL WORK PLATFORM



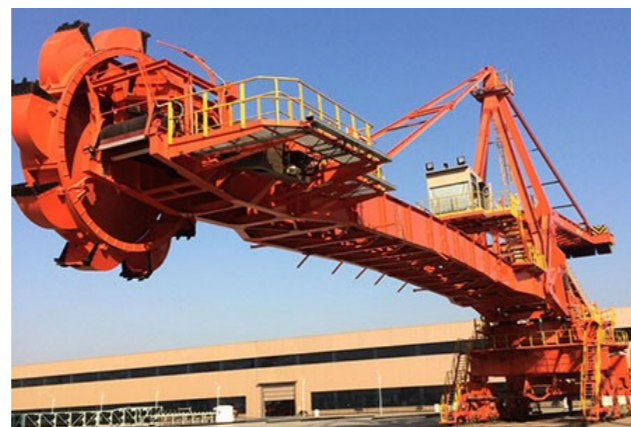
TUNNEL BORING MACHINE



CASTING SYSTEM



HAUL TRUCK



STACKER RECLAIMER



REACH STACKER



DRILLING RIGS

APPLICATIONS



DAM GATE



VERTICAL ROLLER MILL



TUNNEL BORING MACHINE



CASTING SYSTEM



REACH STACKER



DRILLING RIGS

APPLICATIONS



MOBILE CRANE



EXCAVATOR



WHEEL LOADER



TELEHANDLERS



SHIP CRANES



PILE DRIVING BARGE

APPLICATIONS



DREDGER



CARGO SHIP



DRILLING PLATFORM



INSTALLATION PLATFORM

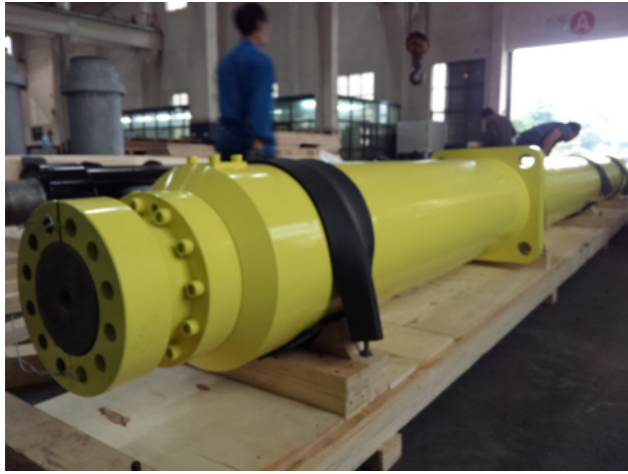


TESTING TECHNOLOGIES

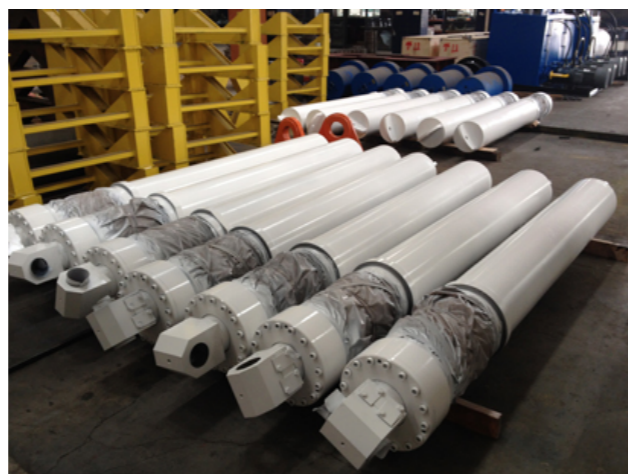


SOLAR ENERGY

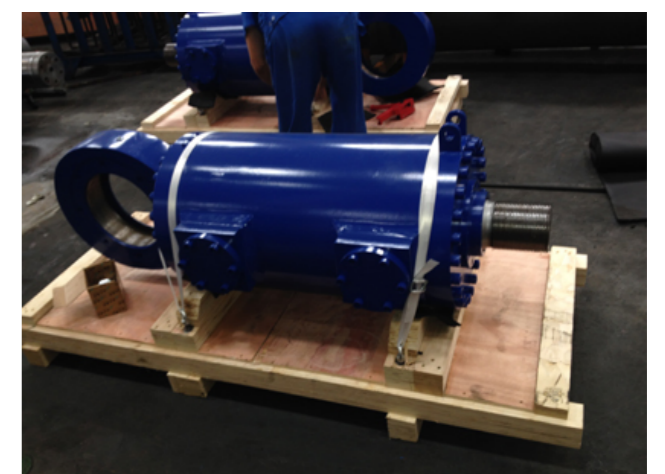
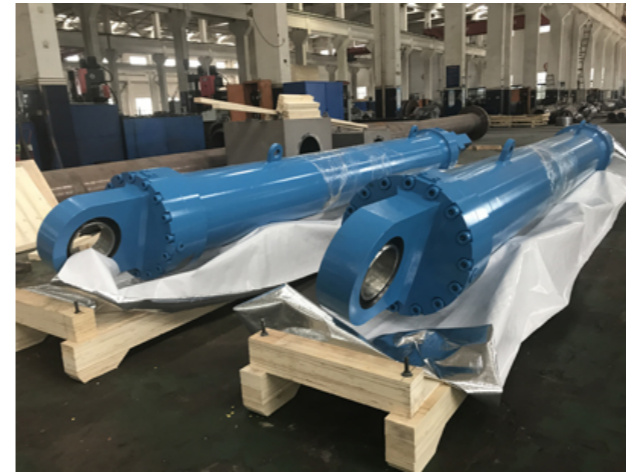
REFERENCE



REFERENCE



REFERENCE



REFERENCE

REFERENCE



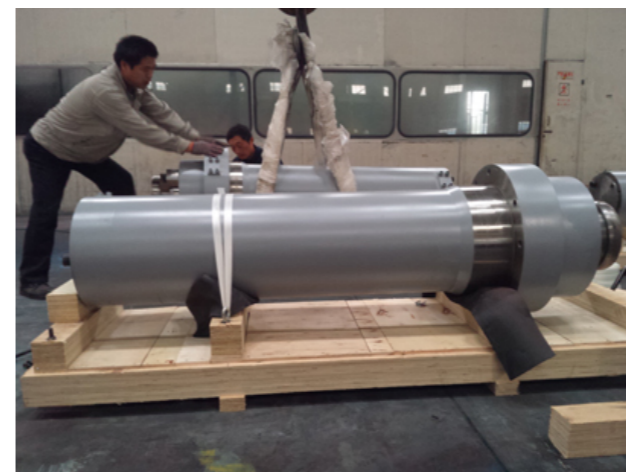
REFERENCE



REFERENCE



REFERENCE



REFERENCE



CONTACTS

HOW TO REACH US

Our Corporate Office is located in the center of Changzhou City , it is about 180 Kilometers from Shanghai Hongqiao Airport / Shanghai Hongqiao Railway Station to us ,or about 250Kilometers from Shanghai Pudong Airport to us.

1.By Train, it is about 10Kilometers from Changzhou Railway Station to our office.

2.By Air,it is about 20Kilometers from Changzhou International Airport to our office

3.By Car, our office is located in the center of Changzhou City, it is very convenient to drive car to reach us.

It takes us about 5 hours to transport all the goods by truck from our manufacturing factory located in Benniu Industrial Park of Changzhou City to Shanghai Port.

HEAD OFFICE

Address: No.4-2717,Powerlong Plaza, Zhonglou District,
Changzhou City,213023, Jiangsu Province, China

Telephone: +86 519 8518 5518

Facsimile: +86 519 8518 5517

Email: sales@flutehydraulics.com

Website: www.flutehydraulics.com